

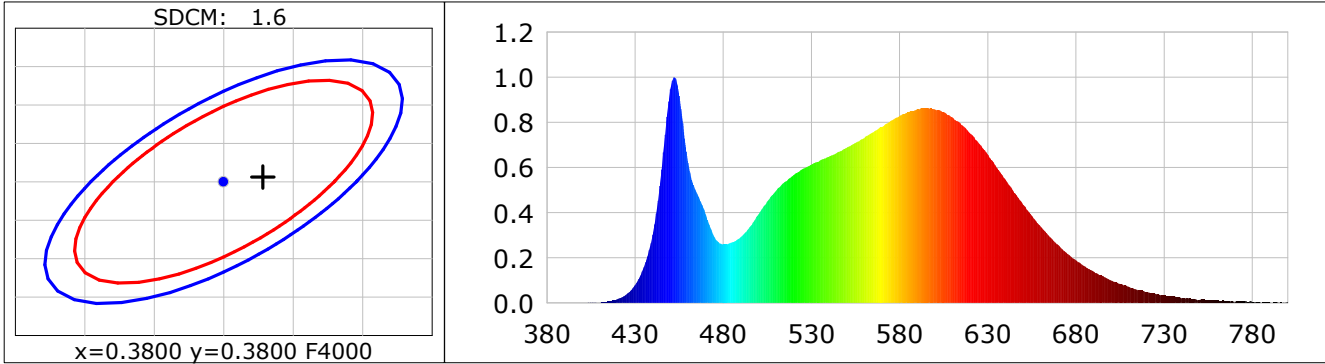
**Lightsource Test Report**

**Product Infomation**

Product Category: LED STRIP	Product Type: LED STRIP
Product Spec: BILY 6	Product Number: 304
Manufacturer: TECSOLEED S.L.	Buyer: TECSOLEED S.L.

**CIE Colorimetric Parameters**

Chromaticity coordinates:  $x=0.3828$   $y=0.3806$   $u(u')=0.2251$   $v=0.3357$   $v'=0.5036$   
 CCT:  $T_c=3965K$  ( $duv=0.00110$ ) Color Ratio:  $R=0.184$   $G=0.780$   $B=0.036$   
 Peak Wavelength: 452.3nm Half Bandwidth: 20.5nm  
 Dominant Wavelength: 578.6nm Color Purity: 0.291  
 CRI:  $R_a=83.0$ ,  $avgR(1\sim14)=76.3$ ,  $avgR(1\sim15)=76.2$  TM30:  $R_f=83$ ,  $R_g=94$   
 GAI:  $GAI\_BB\_8=90.5$ ,  $GAI\_BB\_15=98.0$ ,  $GAI\_EES=70.9$   
 R1 =81 R2 =90 R3 =95 R4 =81 R5 =81 R6 =86 R7 =85 R8 =64  
 R9 =8 R10=75 R11=80 R12=60 R13=84 R14=98 R15=75  
 Color Quality Scale:  $Q_a=82.7$ ,  $Q_f=83.0$ ,  $Q_p=82.1$ ,  $Q_g=91.9$   
 Q1 =81 Q2 =98 Q3 =80 Q4 =76 Q5 =81 Q6 =83 Q7 =85 Q8 =89  
 Q9 =98 Q10=90 Q11=86 Q12=85 Q13=84 Q14=73 Q15=76



**Photometric Parameters**

Luminous Flux: 1203.0 lm Efficiency: 131.39 lm/W Radiant Power: 3.599 W  
 Total mains efficacy: 121.67 lm/W Energy Efficiency Class: E (EU 2019/2015)

**Electric Parameters**

Voltage: 24.000V Current: 0.3815A Power: 9.16W  
 Power Factor: 1.0000 Frequency: 0.00Hz

**Test Infomation**

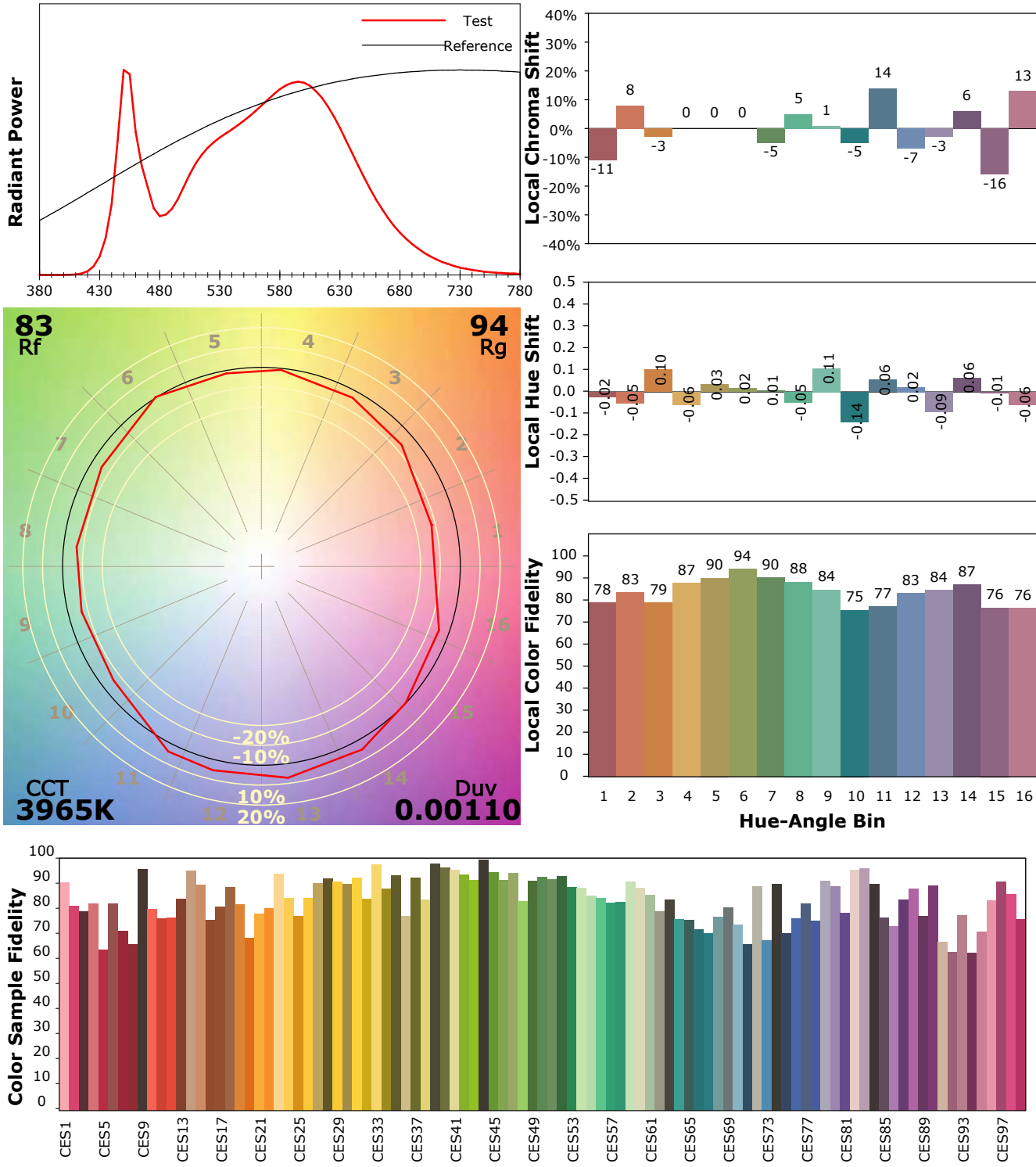
Scan Range: 380~800:1nm Photometric Method: sphere-spectroradiometer  
 Stabilization Time: 0 Sec ALC.: 1.0000 Photometric Condition: Sphere diameter: 1.50m, 4PI  
 Max of Signal: 46608 (2158) CCD Integration Time: 470.03 ms

## IES TM-30-18 Color Rendition Report

**Product Information**

Product Category: LED STRIP  
 Product Spec: 21059602440566  
 Manufacturer: TECSOLED S.L.

Product Type: LED STRIP  
 Product Number: 304  
 Buyer: TECSOLED S.L.



Condition: Tx:19.4'C, Ti:18.4'C, R.H.:60%  
 Test Lab: TECSOLED S.L.  
 Operator: JORDAN GIL DIAZ

Test Device: Inventfine CMS-2S (Plus)  
 Test Time: 2021-11-02 10:13:43  
 Inspector: